

The screenshots that follow shows the GUI design of the setup working of SmartLocator:



Figure 1

Figure 1 shown above displays the loading screen when the assistant starts up.



Figure 2

Figure 2 is the help content along with an option to open/load a map.

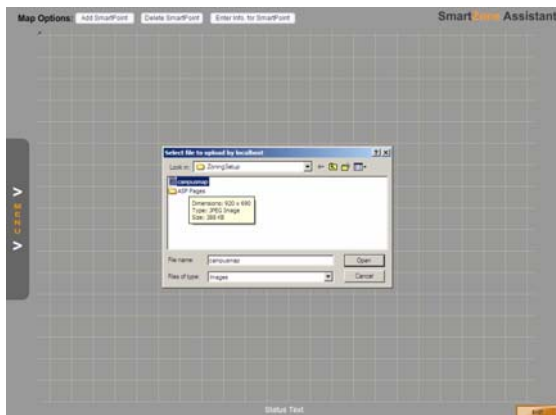


Figure 3

Figure 3 is where the application asks for the *.JPG file which contains the Map.



Figure 4

Figure 4 allows the client to place SmartPoints. These are the points placed to make it an identifiable location on the users PDA.



Figure 5

Figure 5 shows the menu design of the application.



Figure 6

Figure 6 shows the login page on a user's PDA.

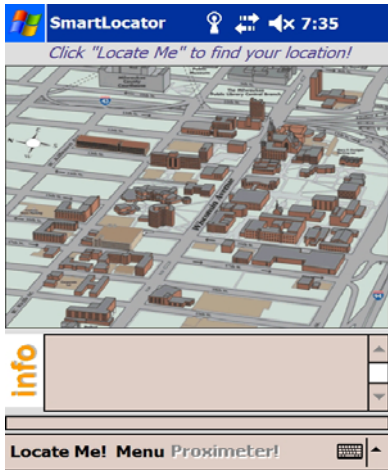


Figure 7

Figure 7 will load the map and display to you the first screen when you log in.



Figure 8

Figure 8 displays when you click on the “Locate Me!” button.

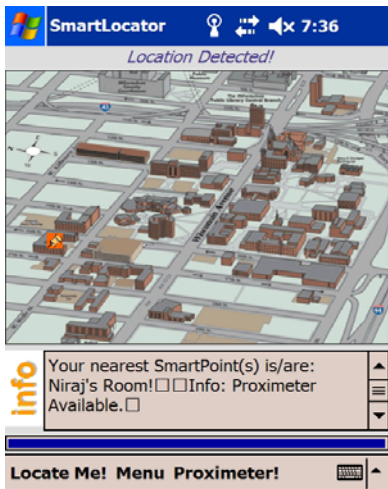


Figure 9

Figure 9 is when the SmartLocator pin points your location.

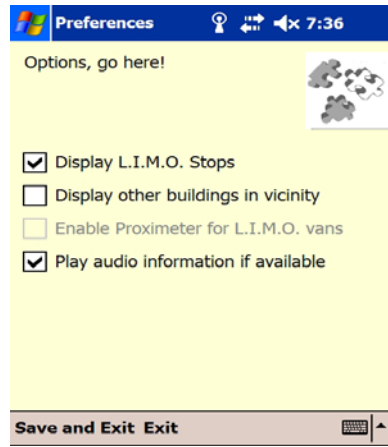


Figure 10

Figure 10 displays the option page of the SmartLocator.



Figure 11

Figure 11 is where the SmartLocator is displaying L.I.M.O. stops from your location.



Figure 12

Figure 12 is when you want to zoom in to your location.

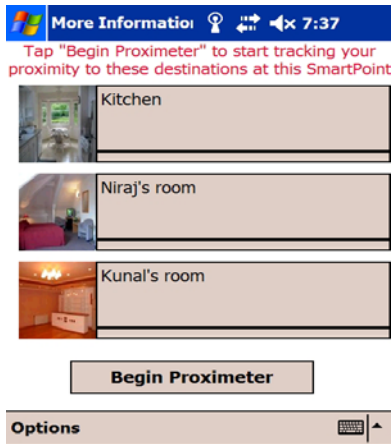


Figure 13

Figure 13 shows the screen before you hit the “Begin Proximeter” button.

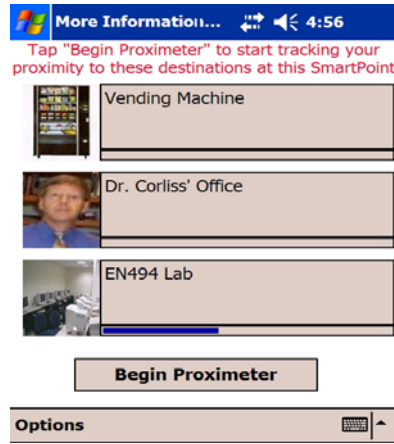


Figure 16

Figure 16 shows the proximity for a different SmartPoint.

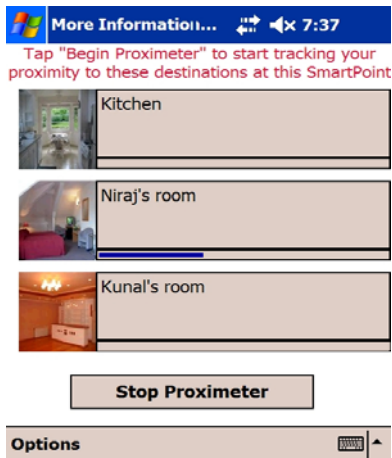


Figure 14

Figure 14 shows the screen when the SmartLocator is tracking your proximity to the displayed destinations at the one SmartPoint.



Figure 15

Figure 15 is a screenshot of the SmartLocator when the “Menu” bar is selected.